



Lock House, St Julian Street, Tenby  
Pembrokeshire, SA70 7AS

Telephone; (01834) 842204  
Email; sales@birtandco.co.uk

www.birtandco.co.uk



## 29 Trafalgar Road, Tenby, SA70 7DW

£325,000



An exciting opportunity to renovate a spacious terraced house, which boasts 2 single garages and parking to the rear. The house has 2 reception rooms, and 5 bedrooms with 4 en-suites. Situated close to the town centre on a popular residential street, this property is conveniently located a few minutes away from Tenby's South Beach and the amenities surrounding and within the Town Walls.

The two garages together with the space in front provide secure parking for multiple vehicles and additional storage space, a rare find in such a central location.

The house has a mix of uPVC and timber windows, and benefits from gas central heating. It requires modernisation and attention throughout, but would make a fantastic and impressive property when complete.



Regulated by R.I.C.S. Giles Birt, B.Sc., M.R.I.C.S

- **Exciting Renovation Project**

- **Near to the Beaches**

- **Bay Window**

- **2 Courtyards**

- **2 Garages & Parking**

- **5 Bedrooms**

- **Close to Tenby Town Centre**

- **4 En-Suites**

#### Entrance Hall

Enter into the porch with original tiled flooring, an inner door leads to the main entrance hall with stairs and timber banister.

#### Lounge 13'1" x 13'9" max (4 x 4.2 max)

A bright room with high ceilings and large bay window to the front of the property, with two alcoves, radiator, and a gas fire.

#### Bedroom Five 11'1" x 11'5" max (3.4 x 3.5 max)

Ground floor bedroom with uPVC window overlooking the courtyard. A wash hand basin sits in the corner of the room, with bi-fold doors to the en-suite.

#### En-Suite 6'6" x 2'5" (2 x 0.76)

Bi-fold door opens to this partly tiled en-suite with shower cubicle and WC.

#### Inner Hall 5'2" x 6'6" (1.6 x 2)

Hallway with handy under stairs storage, with further door to rear leading to dining room and WC.

#### WC 5'2" x 3'3" (1.6 x 1)

Ground floor WC with wash hand basin, and timber framed single glazed window to the side.

#### Dining Room 13'9" x 9'6" (4.2 x 2.9)

A spacious dining room leading through to the kitchen, with two windows to the courtyard (one uPVC double glazed and one timber framed single glazed) and radiator.

#### Kitchen 9'2" x 10'2" (2.8 x 3.1)

Mostly tiled kitchen, with sink set into worktop, and free-standing hob and oven. uPVC window to the rear courtyard, and doorway to the side leading to the utility room.

#### Utility Room 6'6" x 10'9" (2 x 3.3)

A storage room with doors out to the side and back courtyards.

#### Landing

Stairs leading to split level landing, with high level window providing natural light.

#### Bedroom One 19'0" x 10'5" max (5.8 x 3.2 max)

Spacious bedroom to the rear of the house, with two uPVC double glazed windows, radiator and en-suite bathroom.

#### En-suite 5'6" x 6'6" (1.7 x 2)

A bright en-suite bathroom, with WC, wash hand basin and bath. Room has a single pane, timber frame window to the side and a small radiator.

#### Boiler Room 5'2" x 6'6" (1.6 x 2)

Housing a recently installed gas boiler and immersion heater. Timber single glazed window to the side.

#### Bedroom Two 9'10" x 9'2" (3 x 2.8)

An en-suite bedroom with radiator, sink, and uPVC window to the front of the property.

#### En-Suite 6'6" x 2'5" (2 x 0.75)

Partly tiled en-suite shower room providing shower cubicle and WC.

#### Bedroom Three 9'10" x 7'10" (3 x 2.4)

Bedroom with uPVC window overlooking the side courtyard. Wash hand basin in the corner of the room and bi-fold doors to en-suite shower room.

#### En-Suite 6'6" x 2'5" (2 x 0.75)

A partly tiled shower room with shower cubicle and WC.

#### Bedroom Four 11'1" x 6'6" (3.4 x 2)

The fourth bedroom has uPVC window to the front of the property, radiator, and a wash hand basin in the room.

#### Exterior

The house is set back from the road with an enclosed front patio garden. There are two separate enclosed courtyards, one to the side and one to the rear giving access to the two secure garages.

#### Garages

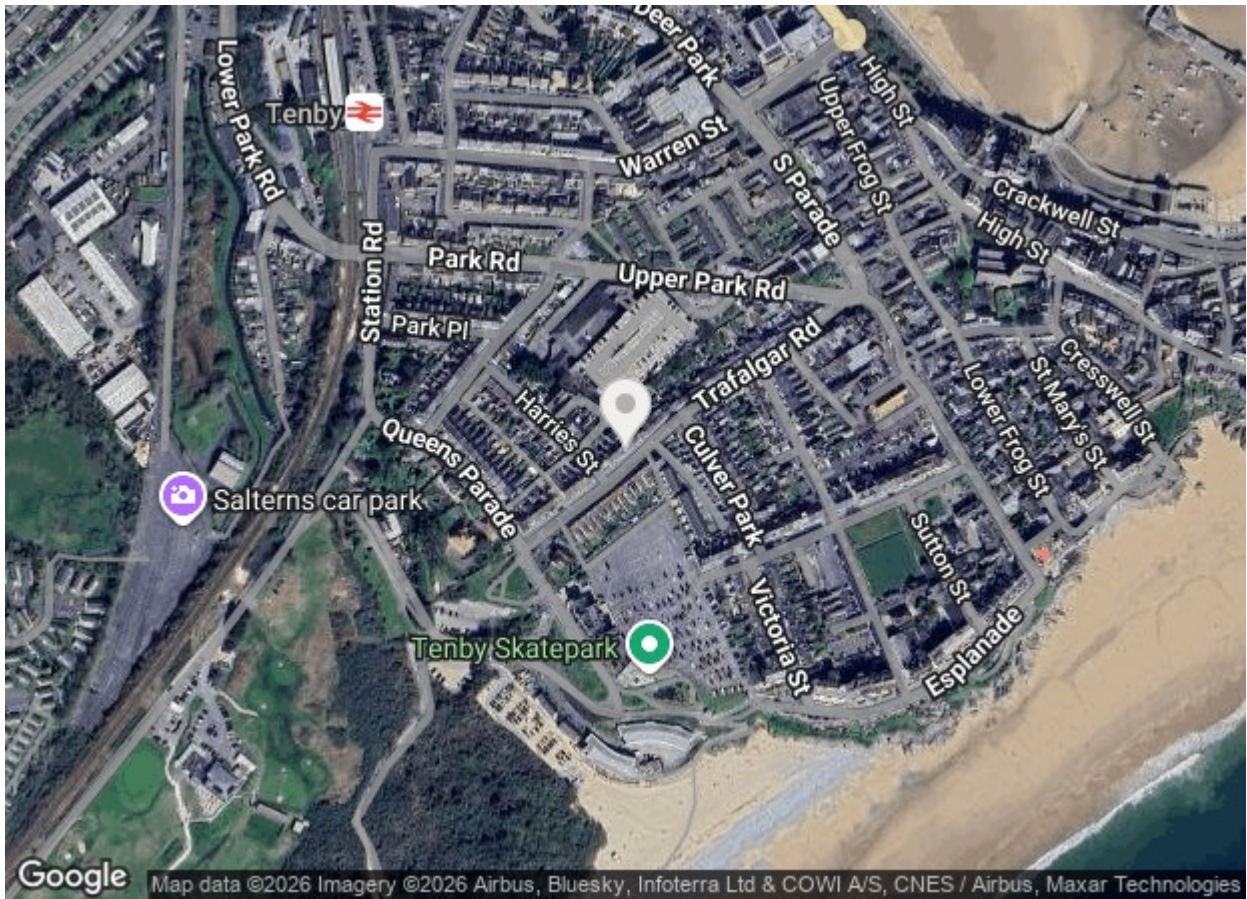
To the back of the house are two secure single garages, with parking space in front. They are accessed from a lane off Harries Street, and the right-hand garage has a door from the courtyard. The garages are both let privately on an informal agreement, and can be vacant upon completion of the sale.

#### Please Note:

We are advised that the property is Freehold.

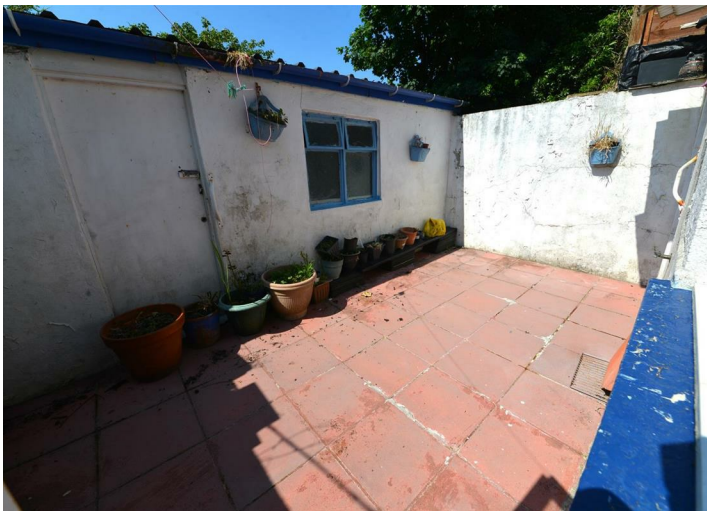
The Pembrokeshire County Council Tax Band is E - approximately £2694.33 for 2026/27.

Mains gas, electric, water and drainage are connected to the property.



From the South Parade with the town walls on the left-hand side, follow the one-way system round to the right and then turn immediately left onto Trafalgar Road. No 29 is located on the right-hand side.

Energy Efficiency Rating		
	Current	Potential
Very energy efficient - lower running costs		
(92 plus) <b>A</b>		
(81-91) <b>B</b>		
(69-80) <b>C</b>		<b>79</b>
(55-68) <b>D</b>	<b>59</b>	
(39-54) <b>E</b>		
(21-38) <b>F</b>		
(1-20) <b>G</b>		
Not energy efficient - higher running costs		
<b>England &amp; Wales</b>	EU Directive 2002/91/EC	

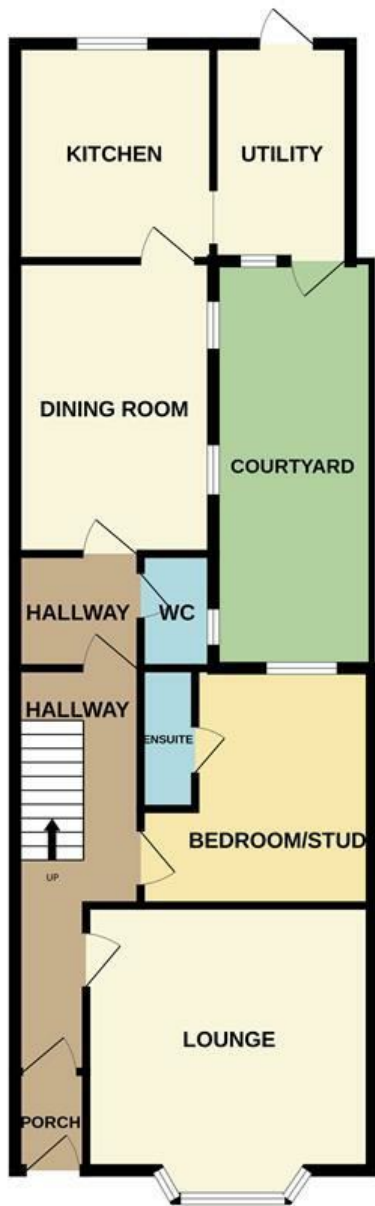




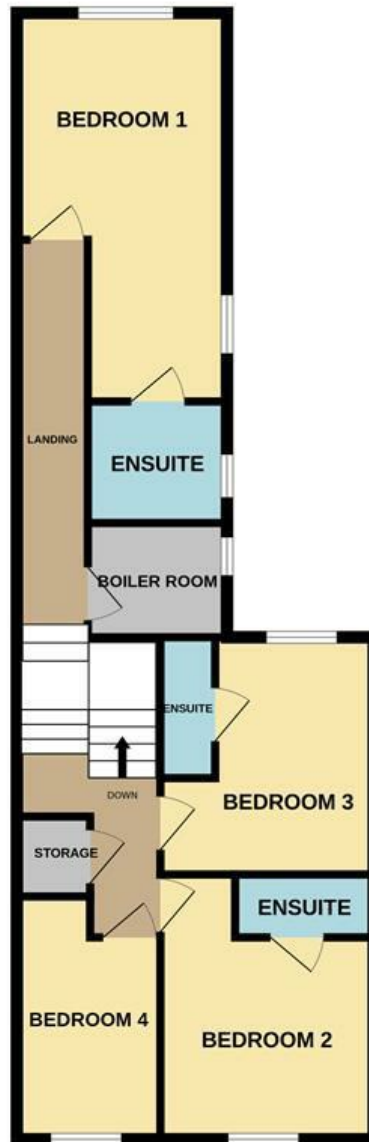


# Floor Plan

GROUND FLOOR  
743 sq.ft. (69.1 sq.m.) approx.



1ST FLOOR  
686 sq.ft. (63.7 sq.m.) approx.



TOTAL FLOOR AREA: 1429 sq.ft. (132.8 sq.m.) approx.  
Measurements are approximate. Not to scale. Illustrative purposes only.  
Made with Metropix ©2024

These particulars, whilst believed to be accurate are set out as a general outline only for guidance and do not constitute any part of an offer or contract. Intending purchasers should not rely on them as statements of representation of fact, but must satisfy themselves by inspection or otherwise as to their accuracy. No person in this firm's employment has the authority to make or give any representation or warranty in respect of the property.